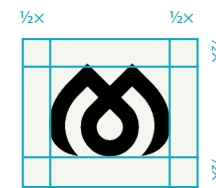


GIVE THE LOGO SOME SPACE!

Please respect the given white space around the logo at all times.

It is very important that the logo, in any variation, get's the minimum amount of "white space" around it. This is an off-limits area, where no other visual elements should be used.

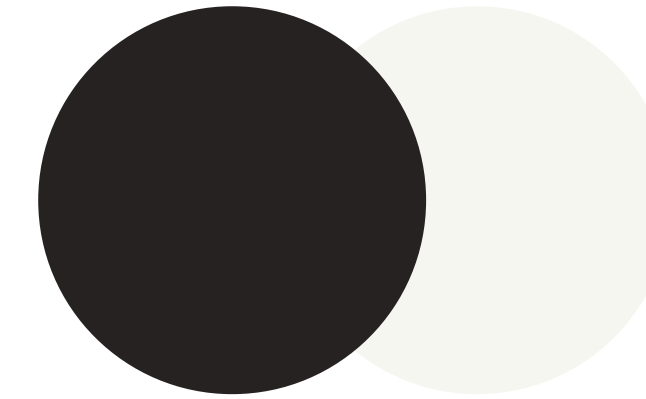
Measuring unit
The white space uses the width of the M as the base unit, and then the following proportions as shown around each version.



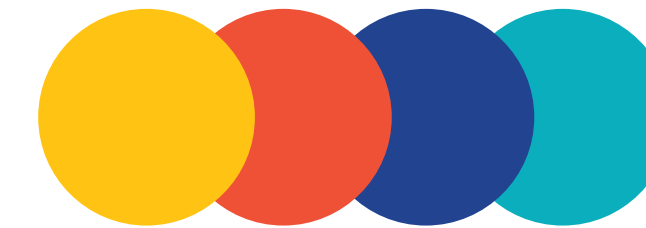
BLOCK EXTRA CONDENCED

BLOCK EXTRA CONDENCED

Mink black
CMYK 70/65/65/70
RGB 40/35/35



Mink white
CMYK 3/3/5/0
RGB 245/245/240



| | | | |
|-----------------|----------------|------------------|-----------------|
| Mink yellow | Mink red | Mink blue | Mink teal |
| CMYK 0/25/100/0 | CMYK 0/85/85/0 | CMYK 100/90/10/0 | CMYK 75/10/25/0 |
| RGB 225/195/15 | RGB 240/80/55 | RGB 35/65/145 | RGB 15/175/190 |

Avenir Next Regular
Avenir Next Bold

Avenir Next Regular
Avenir Next Bold